

RÉPLIQUES

Acrodance

Duration 35 minutes

2 performers - For any public

Creation 2019 for public space

LE GRAND JETÉ !

Compagnie Frédéric Châtel



Cie Le grand jeté !

French company

Coproduction : L'arc, scène nationale Le Creusot

Partenaires / Partners : Théâtre de Morteau, Wolubilis Bruxelles, Notre-Dame-de-Monts - Les Déferlantes, L'Abattoir CNAREP Chalon sur Saône.

Choreographer Frédéric Cellé | **Distribution** Javier Varela Carrera et Pierre Theoleyre
Scenography Gilles Faure | **Music** Romain Dubois

Repliques is a male face to face duet, where flight and fall will look like one. The show is intended as graduated responses which go crescendo.

WORKING NOTES

Two motorized mobile cubes set on circular rails, they are facing. The public is placed around. Like a mirror effect, performers will be identical to insist on the replica theme. Little by little the units will start moving adding another difficulty for the performers. As a matter of fact the acrobat dancers will be able to look at each other, imitate each other and react. An ideal situation to test numerous vertigo possibilities, an awakening of senses. The two cubes will offer an incredible pedestal which will allow the public eyes to circulate easily. The mobile cubes will in turns change into a springboard, a diving board. Reciprocity will not show through the perception of the apparatus, but really through the private body to body language. No drama or lyrism throughout this very work but rather a joyful quest to go beyond one's limit.



TOPIC

The content of the show is based on the topic of the replica to explore the interpretation issue. How movement, gesture can be performed when you are a dancer-acrobat or an acrobat-dancer. There is a thin gap between the genres nevertheless it is fascinating

The dancer, more precisely his body chooses an interpretation depending on the risks he is ready to take (challenge, stunt, acrobatics, poetry by insisting on fluidity, creative momentum, perception.)

How will both performers find their own way through this perilous exercise of defying the law of gravity?

The brotherly relationship developing between the dancers is the common thread of the show, through the dialogue they invent this fantastic journey.

It will be a strong and graphic show.



SCENOGRAPHY



Duration : 35min

Play areas : Public spaces, street, parks, theaters...

Space of play : 11 x 11m de diameter

Public in 360° - possibility two or three sides

Smooth floor, no slope

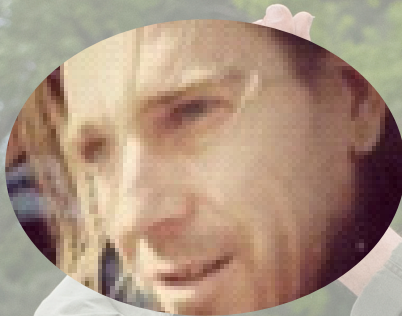
Artists on tour : 4 persons

We can't play if it's raining or if the soil is wet

L'ÉQUIPE



Frédéric Cellé
Choreographer



Gilles Faure
Scenography



Romain Dubois
Music



Javier Varela Carrera
Acrobat



Pierre Theoleyre
Dancer

INFORMATIONS

Duration : 35min

Play areas : Public spaces, street, parks, theaters...

Space of play : 11 x 11m de diameter

Public in 360° - possibility two or three sides

Smooth floor, no slope

Artists on tour : 4 persons

We can't play if it's raining or if the soil is wet

CONTACTS

(+33) 6 80 54 64 04 / diffusion@legrandjete.com

www.legrandjete.com